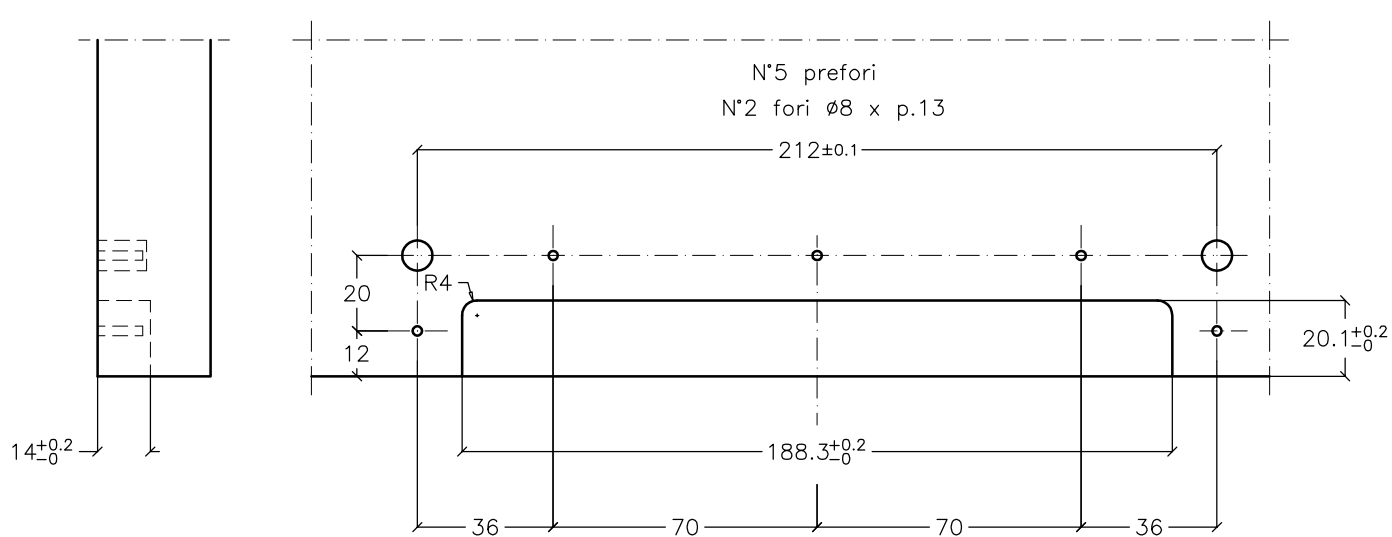
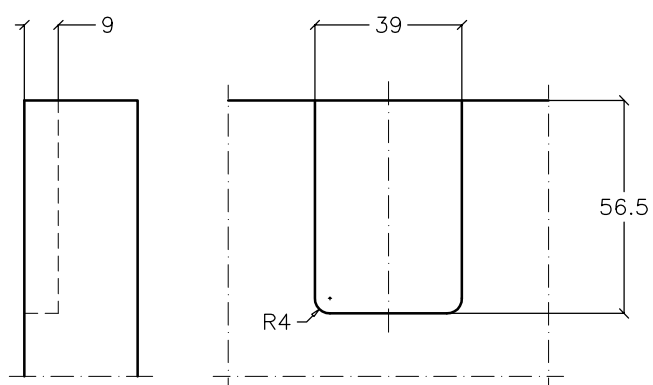
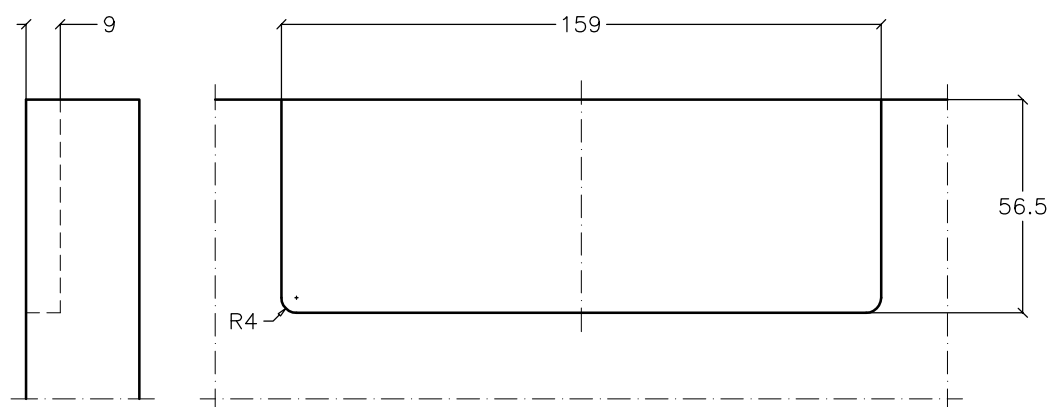
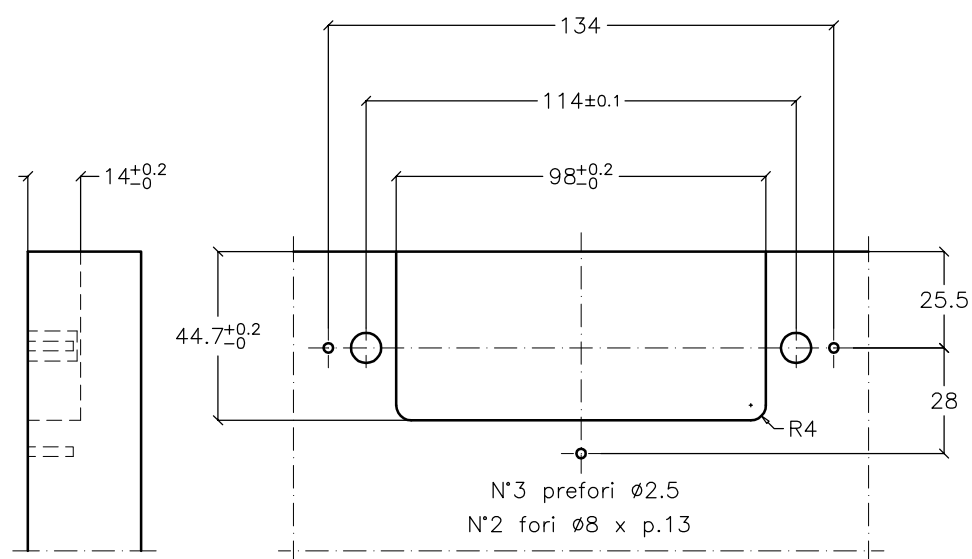
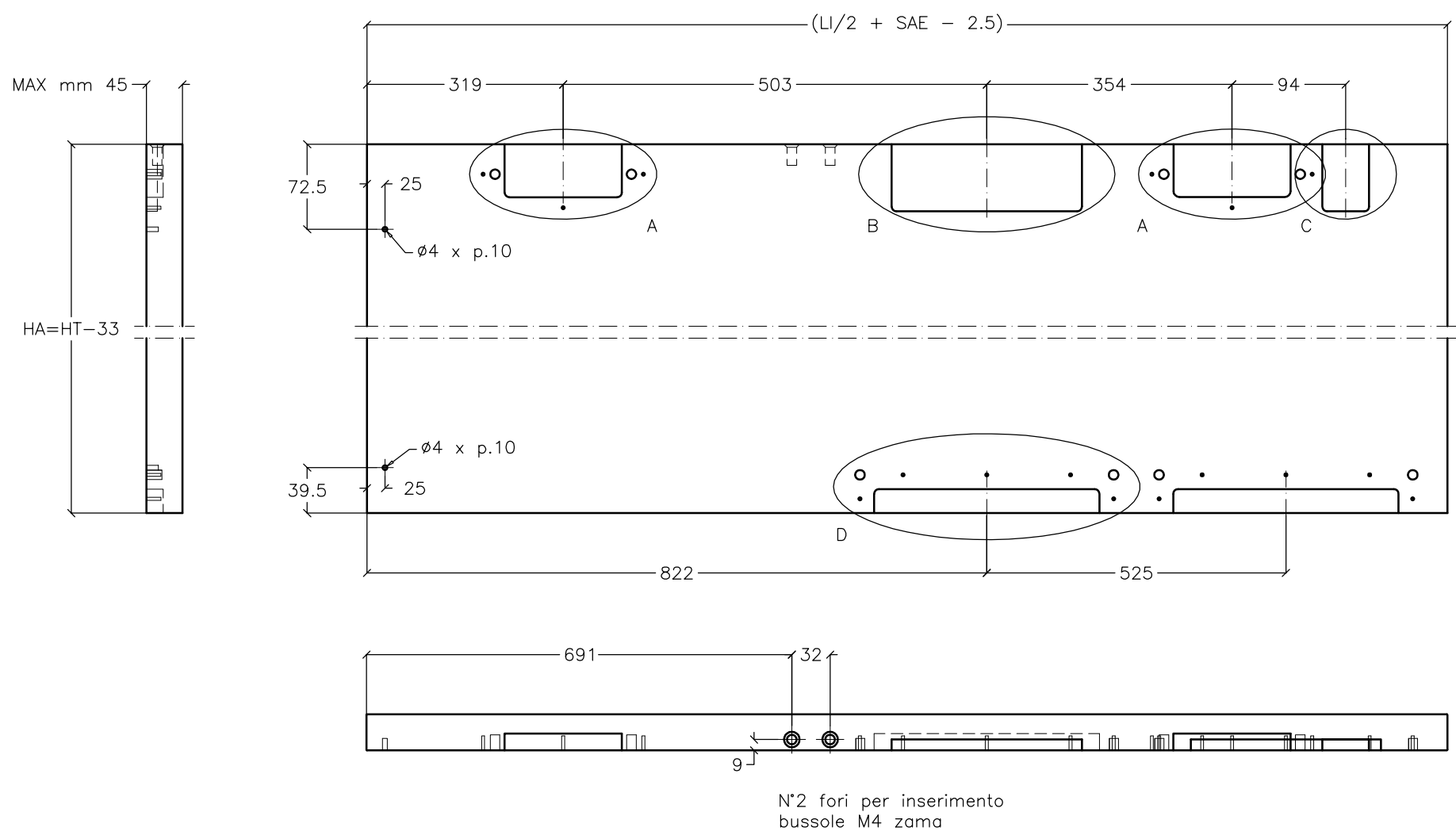
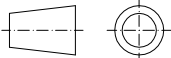
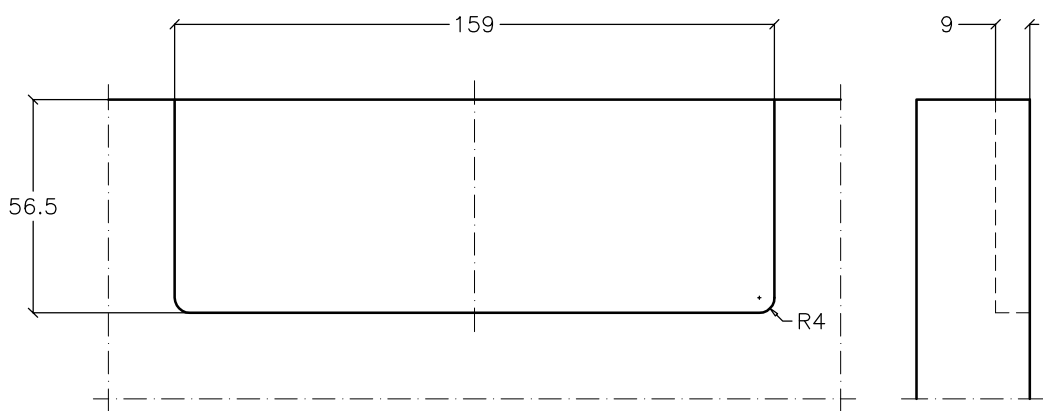
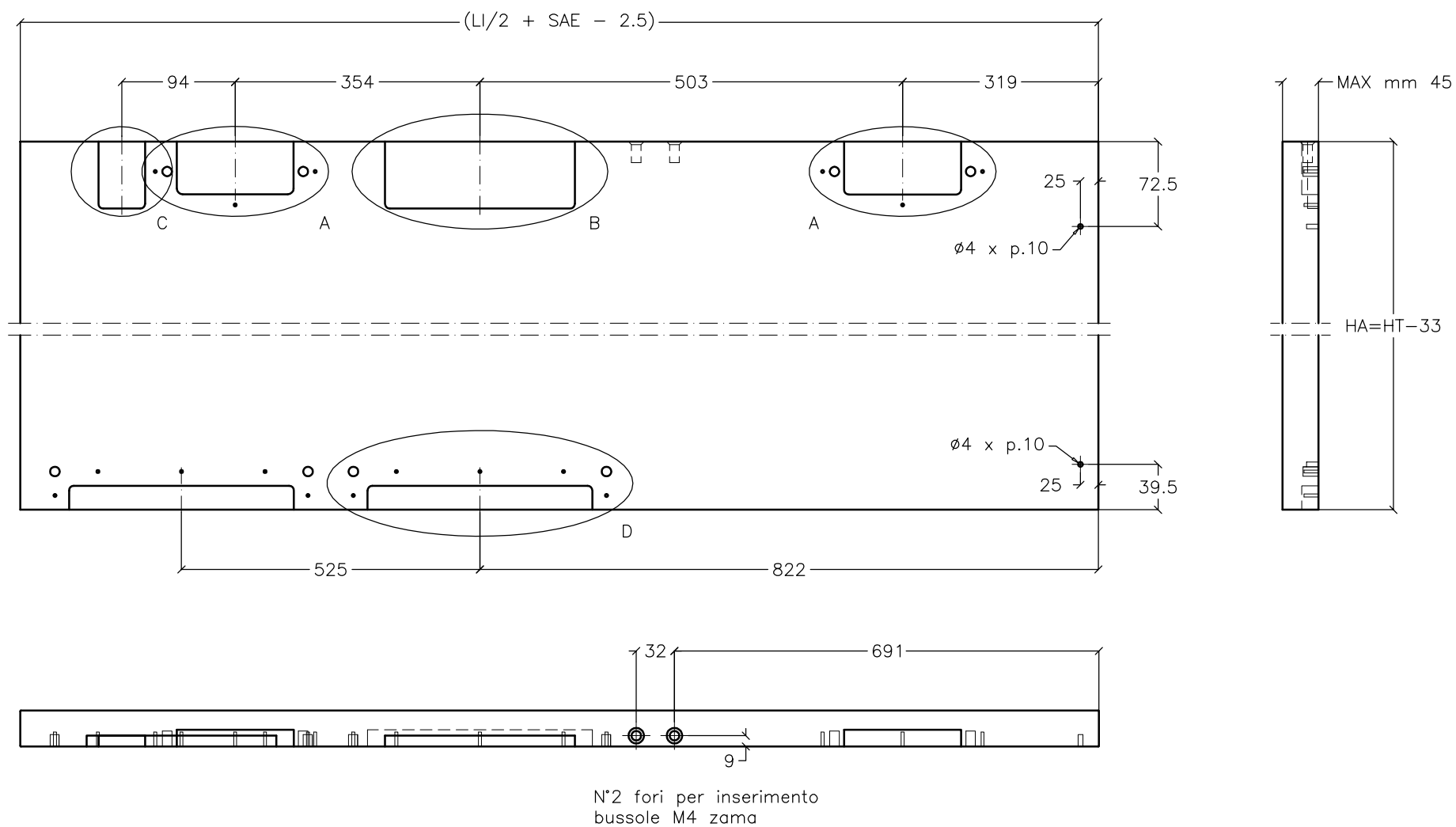


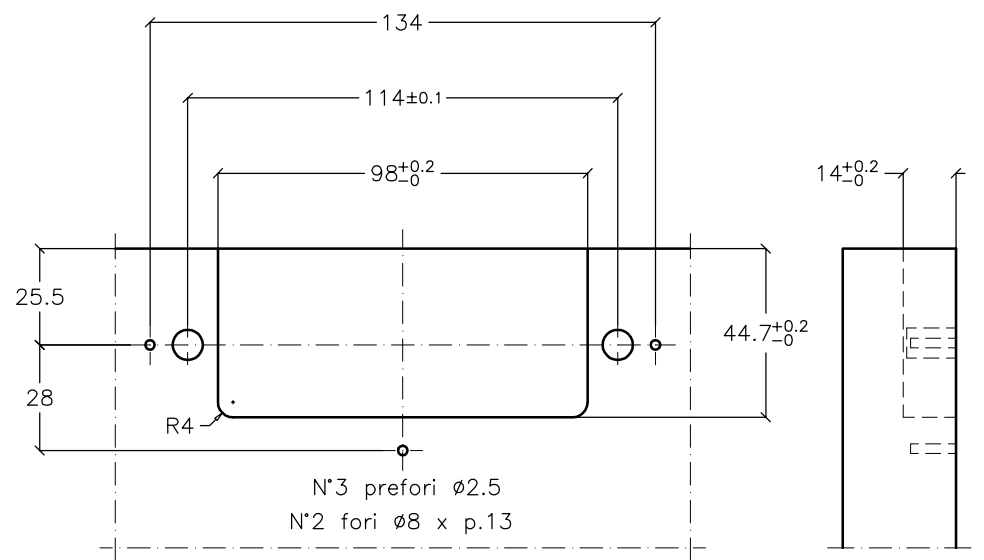
Bortoluzzi mobili s.r.l.	Dis ARMADIO LI 3000±3199.9	Scala f.s.	Data 08/07/09	
Descrizione	Lavorazioni su armadio 2 ante step LI 3000±3199.9 — Slider Large		Agg.1 .	
Materiale			Agg.2 .	
			Agg.3 .	
Disegnato	Daniele		Controllato	Rudy



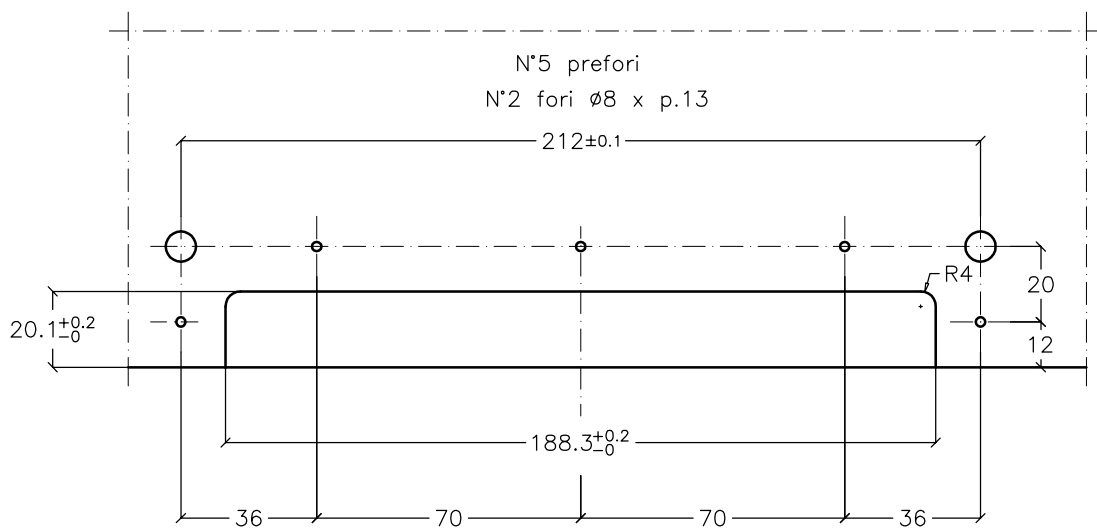
Bortoluzzi mobili s.r.l.	Dis .ANTA_SX_33	Scala .f.s.	Data .08/07/09
Descrizione Anta sinistra a 33 mm da terra; armadio 2 ante step LI 3000÷3199.9 – Slider Large		Agg.1 .06/08/09 Agg.2 . Agg.3 .	
Materiale .			
Disegnato Daniele		Controllato Rudy	



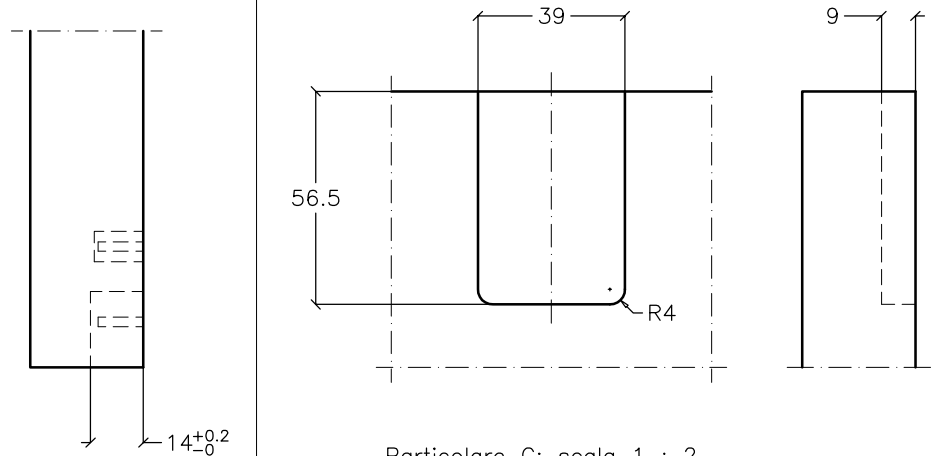
Particolare B; scala 1 : 2



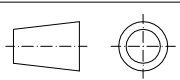
Particolare A; scala 1 : 2



Particolare D; scala 1 : 2



Particolare C; scala 1 : 2

Bortoluzzi mobili s.r.l.	Dis .ANTA_DX_33	Scala .f.s.	Data 08/07/09
Descrizione Anta destra a 33 mm da terra; armadio 2 ante step LI 3000÷3199.9 – Slider Large			Agg.1 06/08/09 Agg.2 . Agg.3 .
Materiale .			
Disegnato Daniele		Controllato Rudy	