

 **ITALIANA**[®]
f e r r a m e n t a



 **MENGUAL**[®]

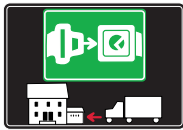
Vis



CONNECTINGS



SYMBOLS



= SHELF SAFELY LOCKED DURING TRANSPORTATION AND AT HOME.



= ANTI-TURNOVER LOCKING SYSTEM



= NORMS / PATENTS



= PHILLIPS / POZIDRIV



= WITH BUFFER



= PART NO.



= BLADE SLOT



= WITH MAGNET



= PCS. PER PACKAGE



= COMBI SLOT



= HEXAGONAL SOCKET



= NEWTON



= CAPACITY LOADING



= HEXALOBULAR SOCKET



= FRICTION



= WOOD / GLASS THICKNESS



= COUNTERSUNK HEAD



= AUTOMATIC



= HOLE DIAMETER



= PAN HEAD



= DROP DOWN



= DIAMETER



= FLANGE HEAD



= LENGTH



= FLAT HEAD



= STANDARD HINGE



= HEIGHT



= TRILOBULAR SCREW



= KIMANA HINGE



= RIGHT VERSION



= SELF-TAPPING SCREW



= FLAP HINGE



= LEFT VERSION



= EURO THREAD



= WITH SPRING



= SETTING CODE



= METRIC THREAD



= WITHOUT SPRING



= PCS. PER PAD



= PRE-INSERTED SCREW



= REVERSED SPRING



= CUT ON REQUEST



= PRE-INSERTED SCREW AND SPREADING BUSH



= SELF ADHESIVE



= WITH FLANGE

NOTE: Printing errors and omissions may exist despite our best efforts to ensure accuracy. We reserve the right to alter specifications without notice.

MATERIALS

ZA = Zinc Alloy	ST = Steel	HSS = High Speed Steel	BR = Brass	ABS = Acrylonitrile Butadiene Styrene
ZAnk = Nickel-plated Zinc Alloy	STzk = Zinc-plated Steel	AL = Aluminium	WD = Wood	EVA = Ethylene Vinyl Acetate

EP = ENGINEERING PLASTIC	+ EP = other engineering plastic available on request	SR = SOFT RUBBER	+ SR = other soft rubber available on request
--	--	--------------------------------	--

EPn = Natural Engineering Plastic	EPc = Clear Engineering Plastic	SRn = Natural Soft Rubber
EPw = White Engineering Plastic	EPg = Grey Engineering Plastic	SRw = White Soft Rubber
EPwg = Water Green Engineering Plastic		SRb = Black Soft Rubber

 FINISHES	+  = OTHER FINISHES AVAILABLE ON REQUEST
---	---

PART NO.	FINISHES	PART NO.	FINISHES	PART NO.	FINISHES
00	Insignificant finish	IF	Middle Grey	UT	T-Met 9007
AA	Natural	IJ	Light Grey	UZ	T-Met
AB	White	IL	Grey 20	WA	Bronzed
AE	White 9010	IN	Grey met. 26	WI	Burnished
EA	Black	JB	Bright Aluminium	XD	Satin-finished Steel
EC	Matt Black	JC	Aluminium - Chrome	YA	Nickel-plated
EE	Anthracite	JD	Matt Aluminium	YB	Bright Nickel-plated
EW	Grey 9007	JE	Satin-finished Aluminium	YC	Matt Nickel-plated
FU	Gunmetal	JF	Aluminium - Brass	YD	Satin-finished Nickel-plated
FV	Gunmetal V52	JG	Aluminium 5	YQ	Black Nickel
GR	Raw	JL	Aluminium PE 11	Z9	Black Zinc
HA	Brass-Plated	JM	Aluminium RAL 9006	ZA	Zinc alloy
HH	Tropicalized	KA	Chrome	ZN	Zinc-plated
HL	Raw Brass	KB	Bright Chrome	ZQ	Bright Gold
HX	Graphite	KC	Matt Chrome	ZY	Titanium
IA	Grey	NN	Metallic Beige	ZZ	Clear
IB	Metallic Grey	RO	Red		

VIS

VIS is the new concept connecting fitting, designed to achieve practical and strong assembling and especially conceived to join bed sides and panels.

VIS can be mounted on relatively thin panels, with a minimum thickness of 18 mm; for panels with a minimum thickness of 25 mm it is possible to add a Ø 35 mm cover cap.

Moreover this connecting fitting boasts two different tightening positions: standard (+) and strong (++), which helps in case of inaccurate drillings. It is not necessary to disassemble the whole structure to change the tightening position.

VIS is made up of a threaded M8 dowel, a special M6 screw and the Ø35mm cylindric joint.

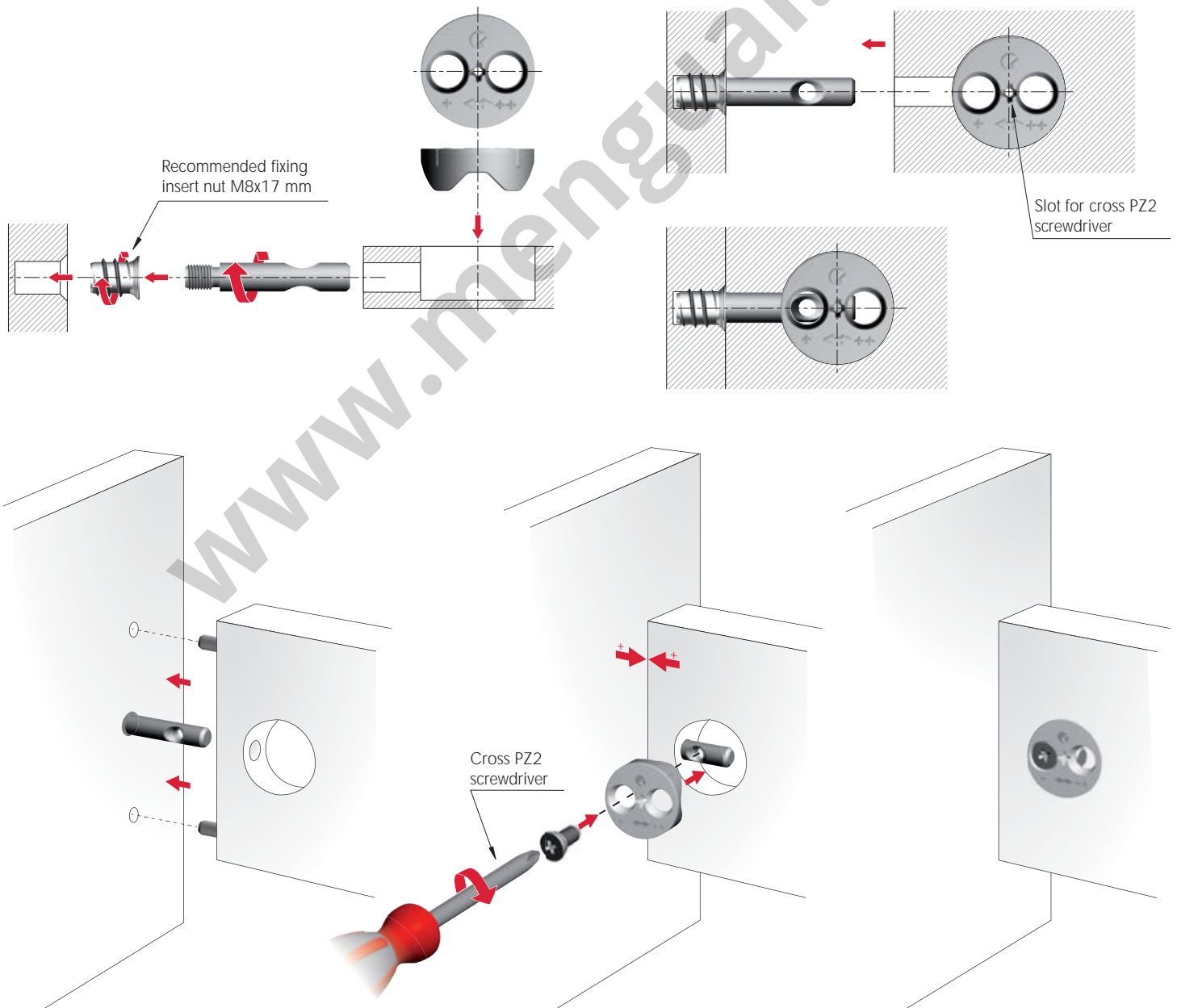
18 mm min.

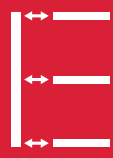


PAT. PENDING



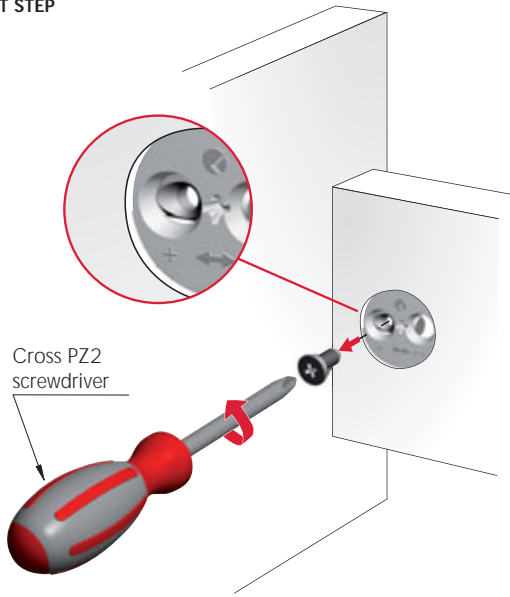
INSTALLATION AND ASSEMBLING





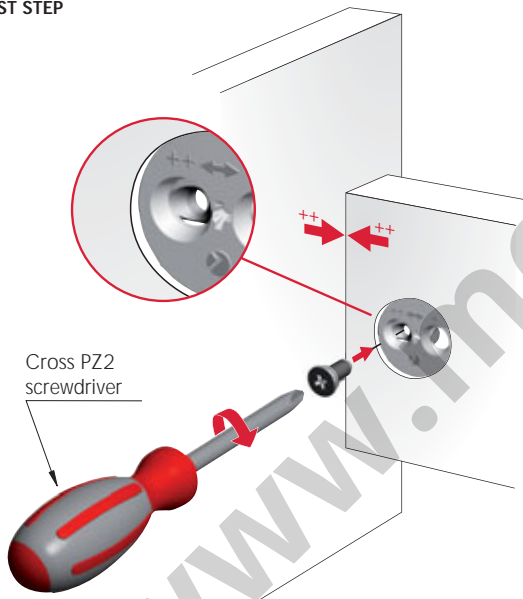
FROM + (minimum) TO ++ (maximum) TIGHTENING

FIRST STEP



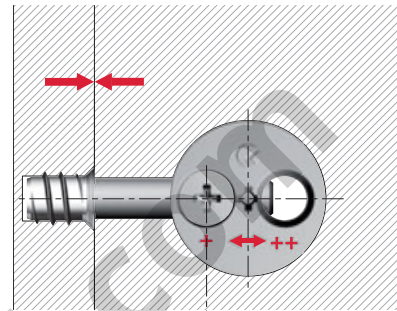
Cross PZ2 screwdriver

LAST STEP

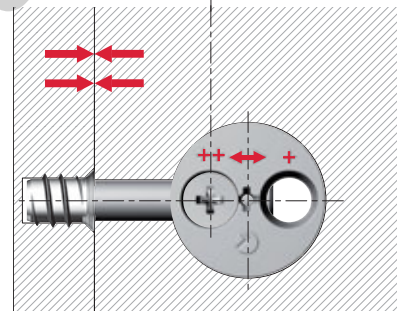


Cross PZ2 screwdriver

Minimum tightening position (+)



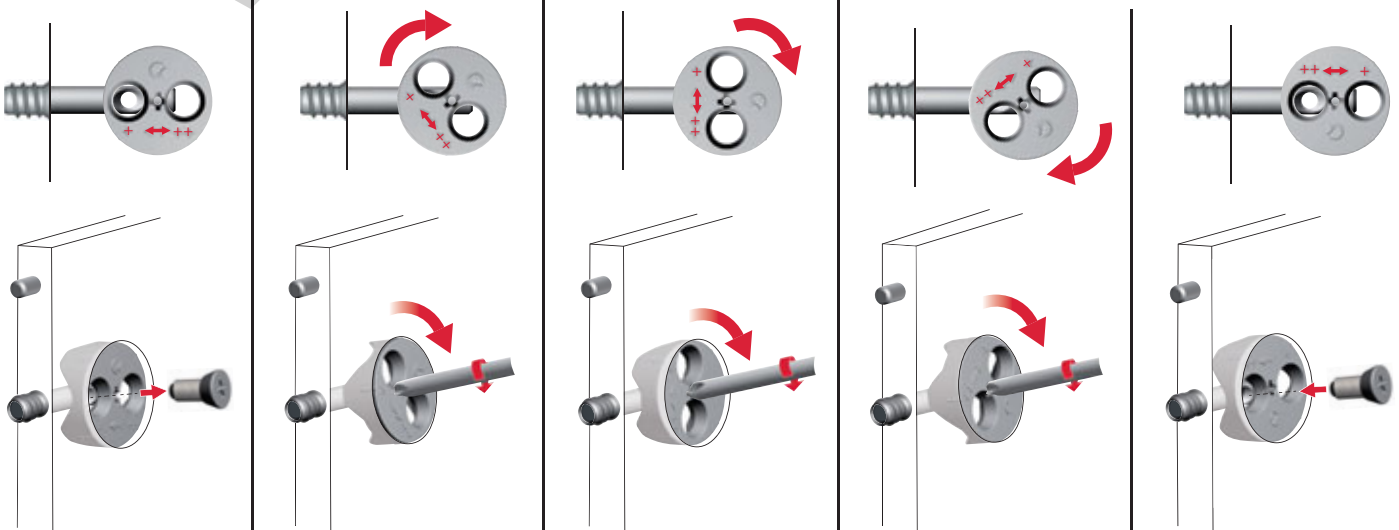
1,2

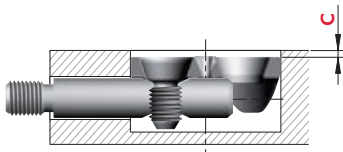
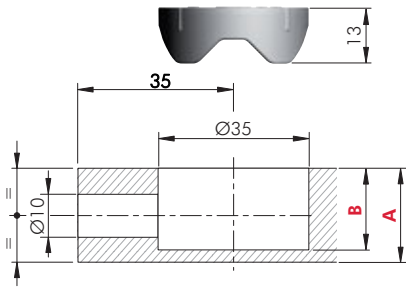


Maximum tightening position (++) = + 1,2 mm

Minimum tightening position (+)

Maximum tightening position (++)

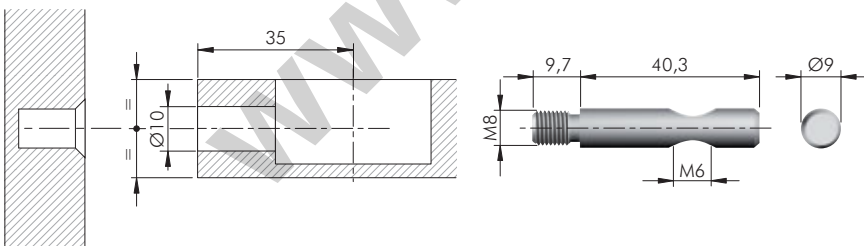









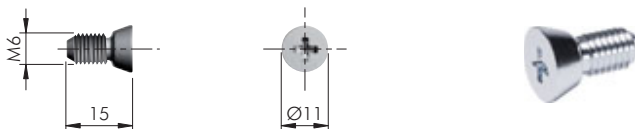
A	B	C
18	15,5	0
19	16,5	0,3
20	17,5	0,8
22	19	1,8
25	20,5	3,3
30	23	5,8








 = 18 mm min.
  = PZ2

  = 600 pcs.
 
21626000ZN



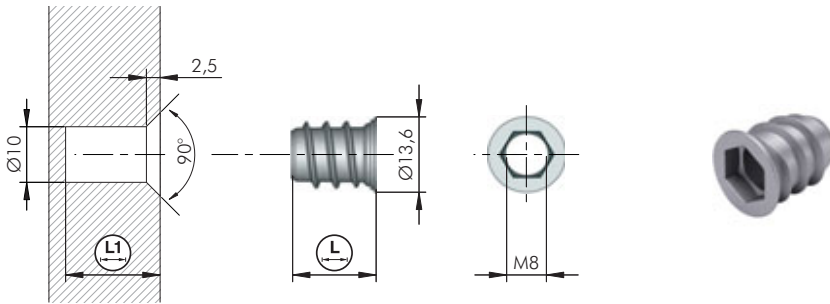
 = M8

  = 500 pcs.
 
21210040ZN



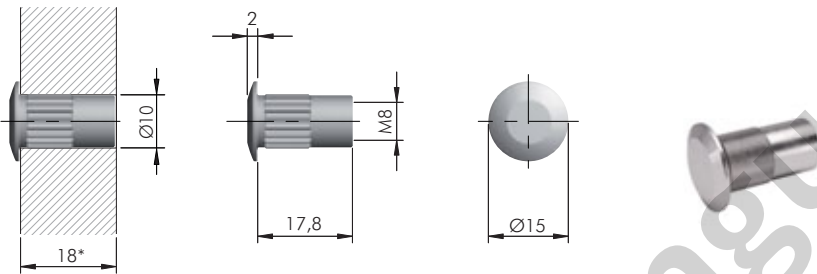
 = M6
  = PZ2
  = 3000 pcs.

  = 3000 pcs.
 
21101060ZN



VIS FIXING ACCESSORIES

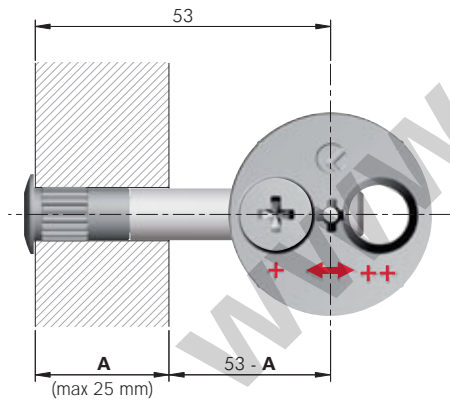


= Ø 10 mm	= M8	
	= S8	
20103010GR	15	17
		4000

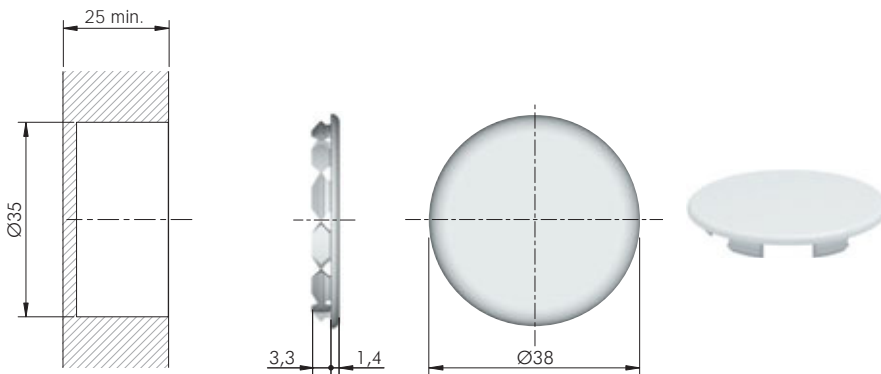


= Ø 10 mm	= M8	
		= 1000 pcs.
20605130YA		

* For Headboard/Footboard thickness other than 18 mm, the drilling plan for VIS has to be modified according to the drawing below.



VIS ACCESSORY



= Ø 35 mm	
	= 5000 pcs.
23011010AB	