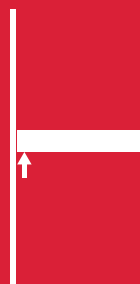




www.mengual.com

Triade



WOOD AND
GLASS
SHELVING
SYSTEMS

TRIADE

TRIADE is the concealed mounting bracket for shelves 25 to 40 mm thick. It has been conceived to simplify the shelf installation. It is provided with three independent adjustments:

- 1) **VERTICAL:** before installing the shelf, the mounting brackets can be adjusted in height and (vertically) aligned through the slots.
- 2) **HORIZONTAL:** while placing the shelf in position, the supporting pins can be slid horizontally.
- 3) **INCLINATION:** when the shelf is partially inserted, the shelf angle can be adjusted front to back by turning the supporting pins with a 10mm open-ended wrench.

The capacity loading is 15 Kg each (shelf weight included) for a shelf max 300 mm deep.
The minimum shelf depth required is 160mm.

ADDITIONAL BENEFITS DUE TO SECURITY LOCKING FEATURE

- Simple additional drilling.
- Small diameter hole in the shelf (only \varnothing 3,5 mm).
- Multiple assembly and disassembly of the shelf.
- Suitable for all thicknesses.
- Tested on plywood, mdf and chipboard.

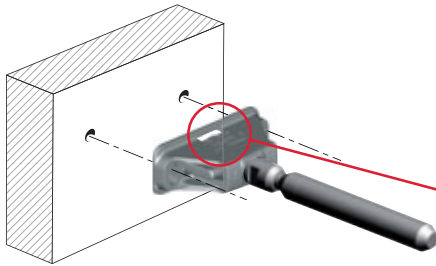
30-40 mm

15 kg for each shelf support
for shelf 300 mm deep

PAT. PENDING

INSTALLATION AND ADJUSTMENTS

WOOD PANEL



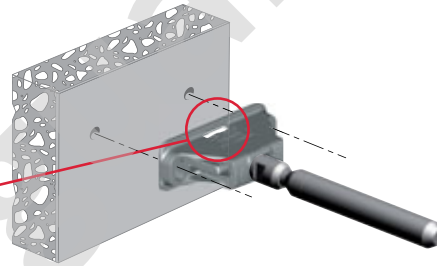
Recommended fixing pan head screw type - head \varnothing 5 mm max.

VERY IMPORTANT

Triade has to be installed with the writing "TOP - ALTO" facing upwards.



SOLID AND PLASTERBOARD PANEL

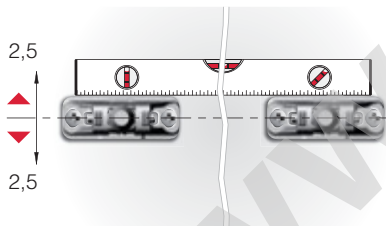


It is the responsibility of the customer:

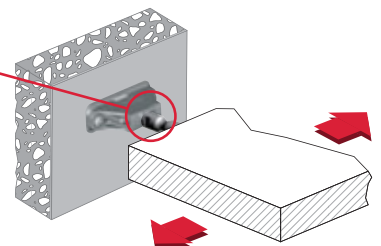
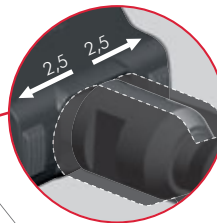
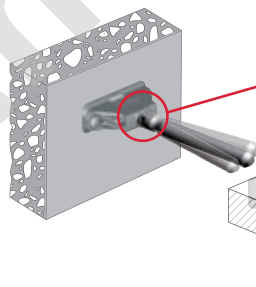
- to ensure the wall is of a suitable quality to hold the shelf fixing in place.
- to use the proper hardware fittings according to the construction of the wall.

For more specific information, please refer to the WARNINGS section at the end of the catalogue.

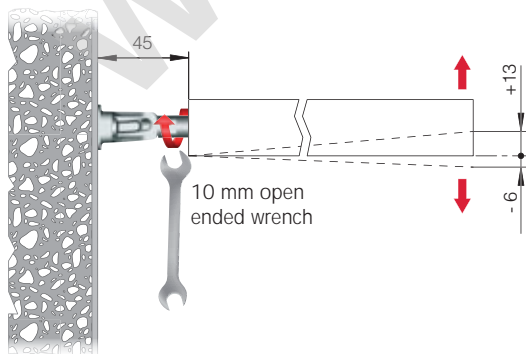
BRACKET ALIGNMENT



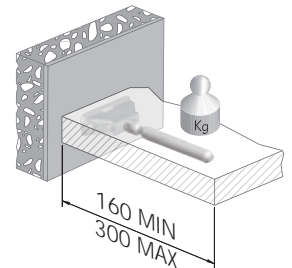
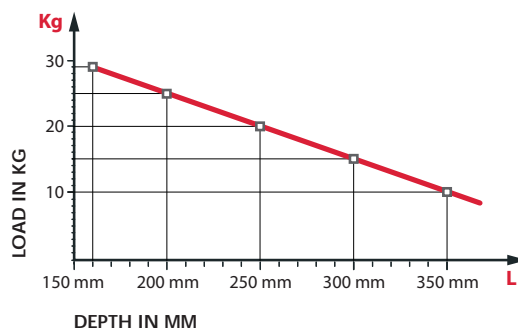
LATERAL ADJUSTMENT



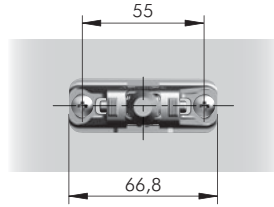
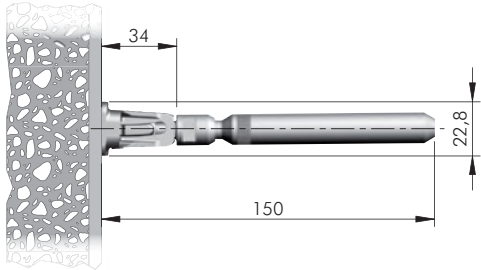
INCLINATION ADJUSTMENT



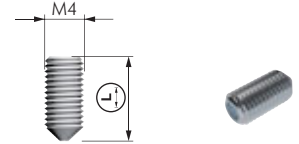
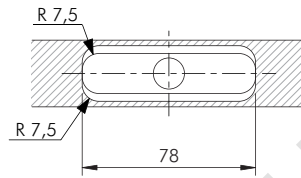
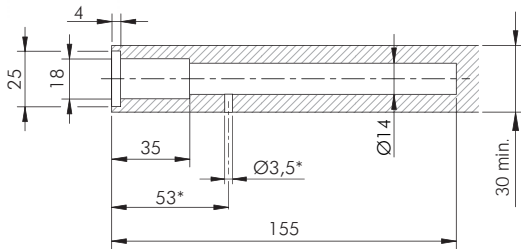
COMBINATION SHELF LOAD AND SHELF DEPTH (The figures refer to 1 shelf support)



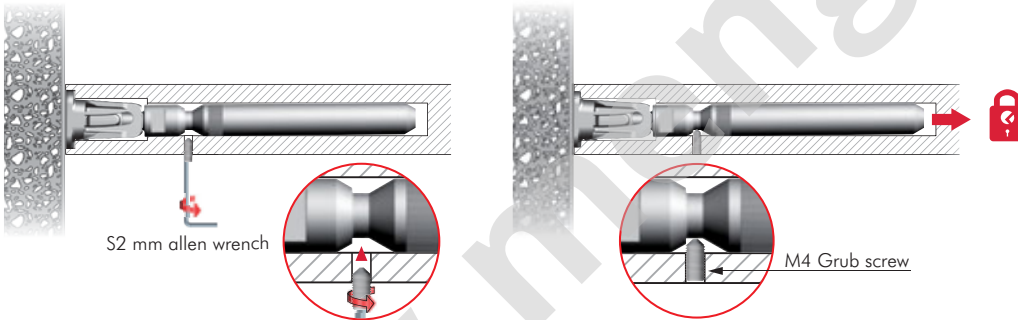
+ shelf weight = 15 kg
MAX for each shelf support



= PZ2
 = open ended wrench 10 mm
 = 50 pcs.
 123
1621501000

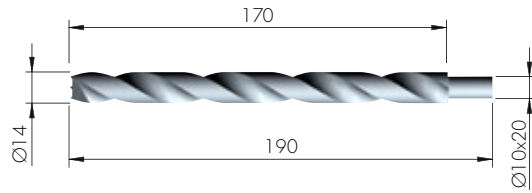
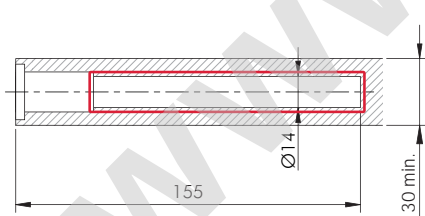


* Optional drilling for security locking with M4 grub screw placed underneath in alignment with the cavity.

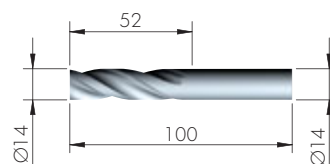
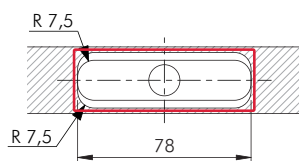
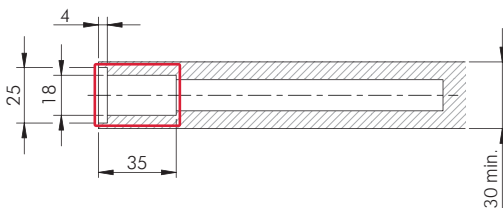


= S2 mm
 = 100 pcs.
 123
21105180ZN | 10 | 30
21105220ZN | 16 | 40

DRILL BIT FOR TRIADE



= on request
 123
1621452000



= on request
 123
1621454000