

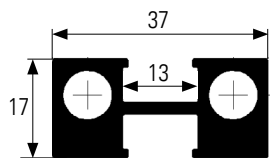
KIT DIVISOR HORIZONTAL INSTRUCCIONES DE MONTAJE

HORIZONTAL PARTITION SET ASSEMBLY INSTRUCTIONS

ELEMENTOS DEL KIT

SET ELEMENTS

Perfil H horizontal
Horizontal H profile
1,5m

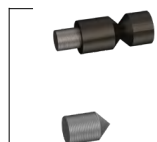


Perfil reductor para vidrio 6mm
6mm transparent gasket
2 x 1,5m



Elementos de unión
Joint elements

x4



Brocas
Drills

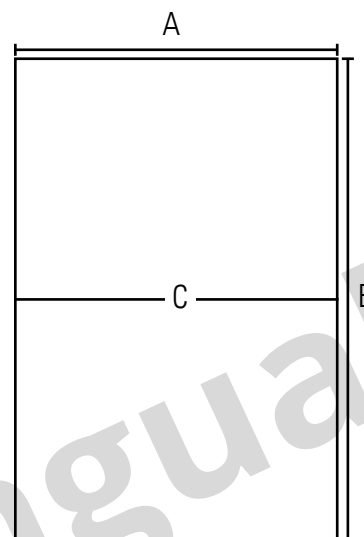


Plantilla
Template



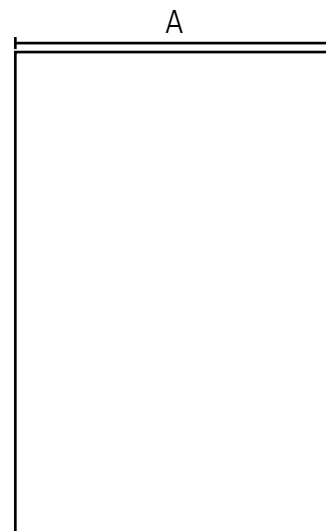
CALCULO DE MEDIDAS PREVIO MEASURES ESTIMATE

CALCULO DE LAS MEDIDAS TOTALES DE LA PUERTA
DOOR TOTAL MEASURES

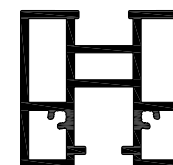


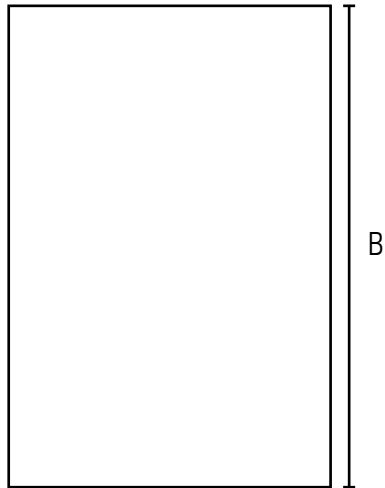
A = Anchura puerta / Door width
B = Altura puerta / Door height
C = Divisor horizontal / Horizontal partition

CALCULAR LAS MEDIDAS DE LOS PERFILES.
PROFILES MEASURES



Perfil horizontal superior e inferior = A - 24mm
Horizontal upper and lower profile = A - 24mm



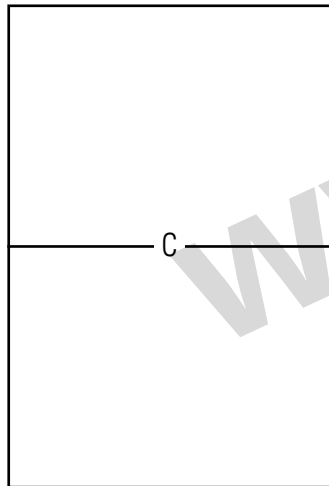


Perfil vertical = B
Vertical profile = B



B

CALCULO PARA PARTIÇÃO HORIZONTAL
ESTIMATION HORIZONTAL PARTITION



Divisor horizontal (C) = A - 24mm
Horizontal partition (C) = A - 24mm



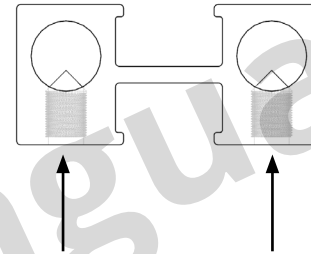
Para calculo de mecanizado de perfiles y dimensiones de vidrios:
For estimation of vertical profiles machining and glass dimensions:

http://www.adinor.info/wp-content/uploads/kit_divisor_horizontal.xlsm

CALCULO PARA PARTIÇÃO MEDIA EN EL PERFIL VERTICAL
ESTIMATION HORIZONTAL PARTITION

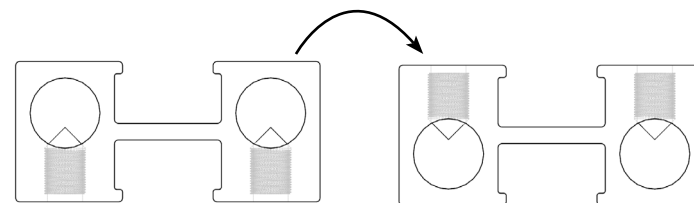
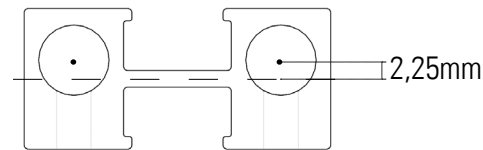
IMPORTANTE
IMPORTANT

El perfil horizontal - partición debe ser taladrado siempre en la siguiente cara:
Horizontal partition profile must be drilled on this surface:

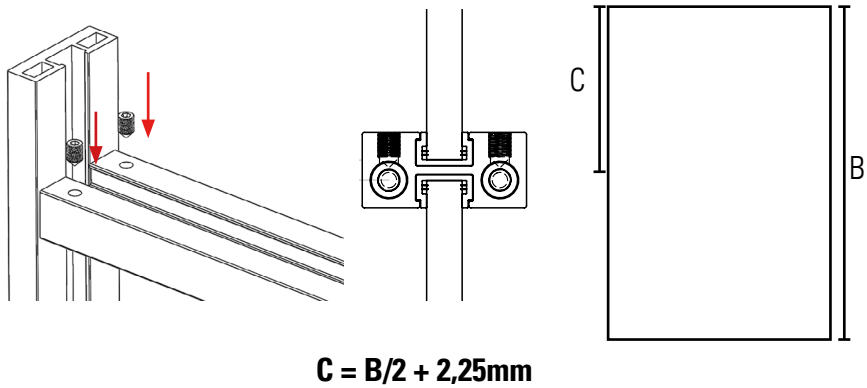


Para una instalación en la que el prisionero quede oculto a la vista puede voltearse el perfil pero debe tenerse en cuenta un desplazamiento de 2,25mm.

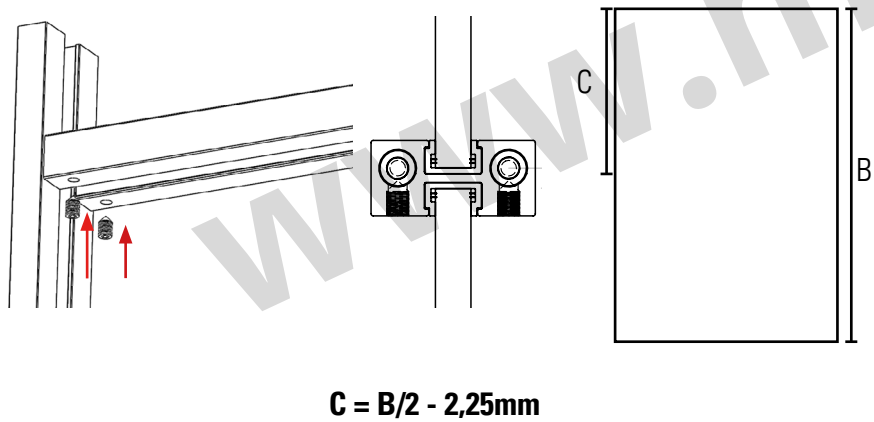
For hide the joint elements you could rotate the profile but you have to consider the center displacement 2,25mm



Opción 1: Vista del perfil horizontal divisor prisioneros arriba
Option 1: Horizontal partition view with joint elements up

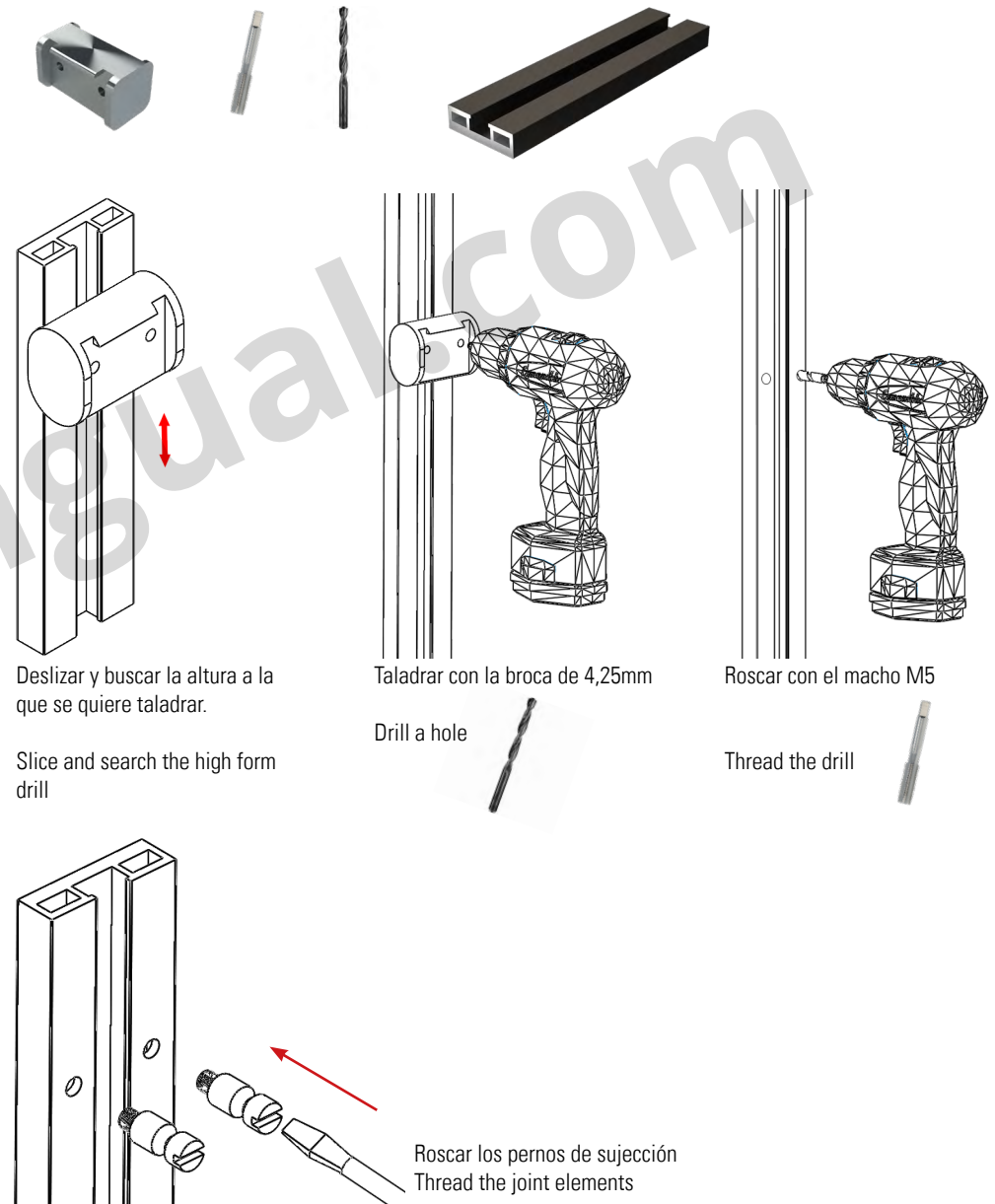


Opción 2: Vista del perfil horizontal divisor prisioneros abajo
Option 2: Horizontal partition view with joint elements down



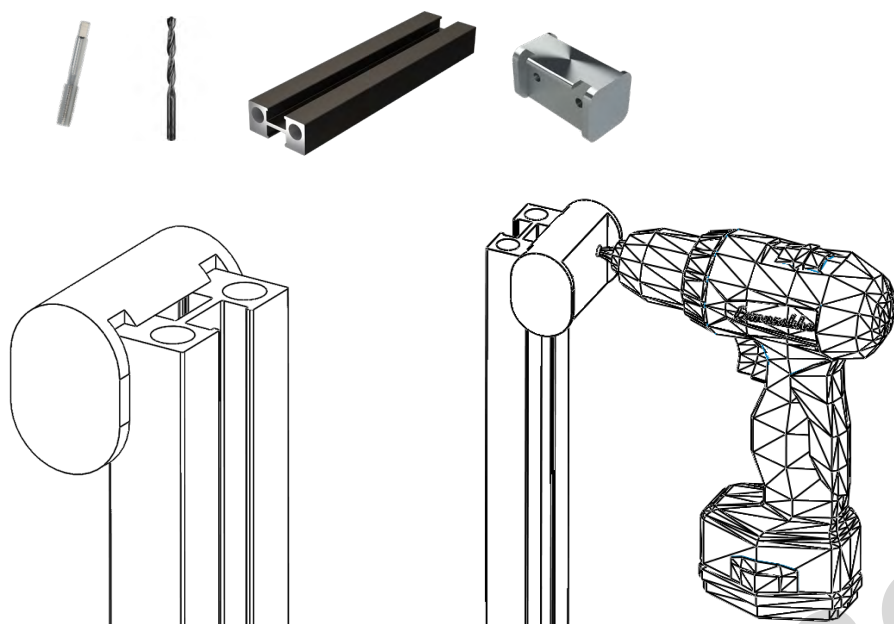
PASO 1 MECANIZADO DEL PERFIL VERTICAL

STEP 1 VERTICAL PROFILE DRILL



PASO 2 MECANIZADO DEL PERFIL HORIZONTAL

STEP 2 HORIZONTAL PROFILE DRILL

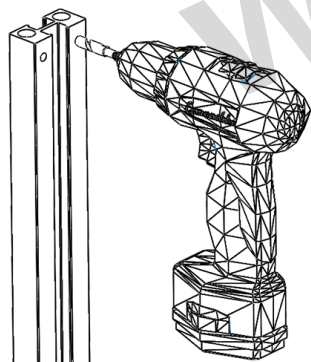


Asegurarse de que la plantilla esta bien situada en el inicio del perfil.

Make sure of the right position of template at head of profile

Taladrar con la broca de 4,25mm

Drill a hole



Roscar con el macho M5

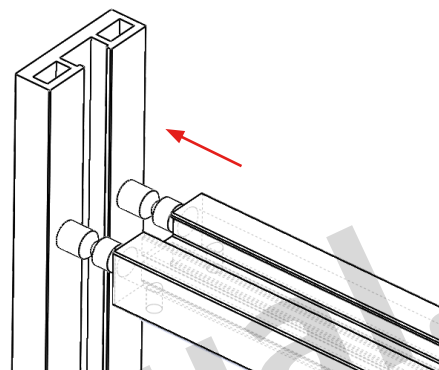
Thread the drill



PASO 3 FIJAR EL PERFIL HORIZONTAL AL VERTICAL CON LOS PRISIONEROS

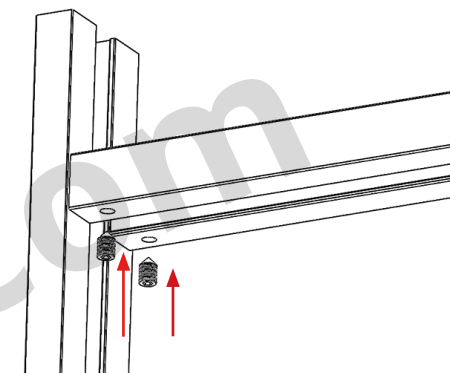
STEP 3 FIX HORIZONTAL AND VERTICAL PROFILE WITH JOINT ELEMENTS

OPCION A: TORNILLOS ABAJO
OPTION A: SCREWS DOWN

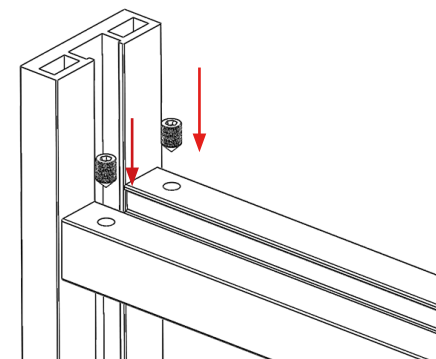


Introducir el perfil horizontal en los pernos de fijación atornillados en el perfil vertical.

Introduce the horizontal profile in the vertical joint elements fixed in the step 1.



OPCION B: TORNILLOS ARRIBA
OPTION B: SCREWS UP



Fijar perfiles horizontal y vertical con los prisioneros
Tener en cuenta posicionamiento de perfil (ver paso 2)

Fix horizontal and vertical profiles with joint elements.
You have to consider the position of the horizontal profile