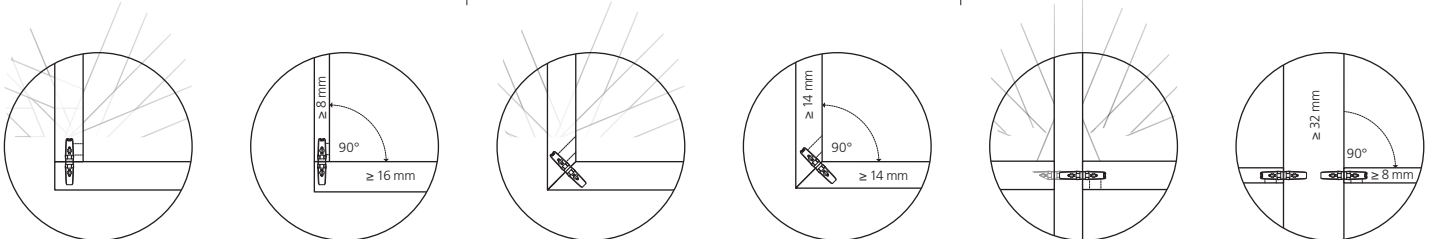
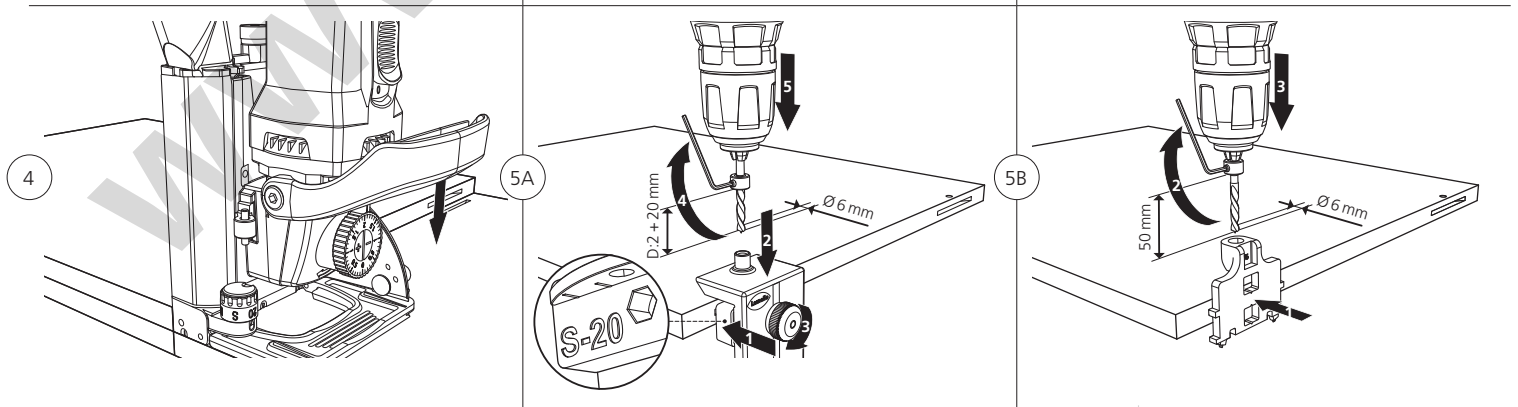
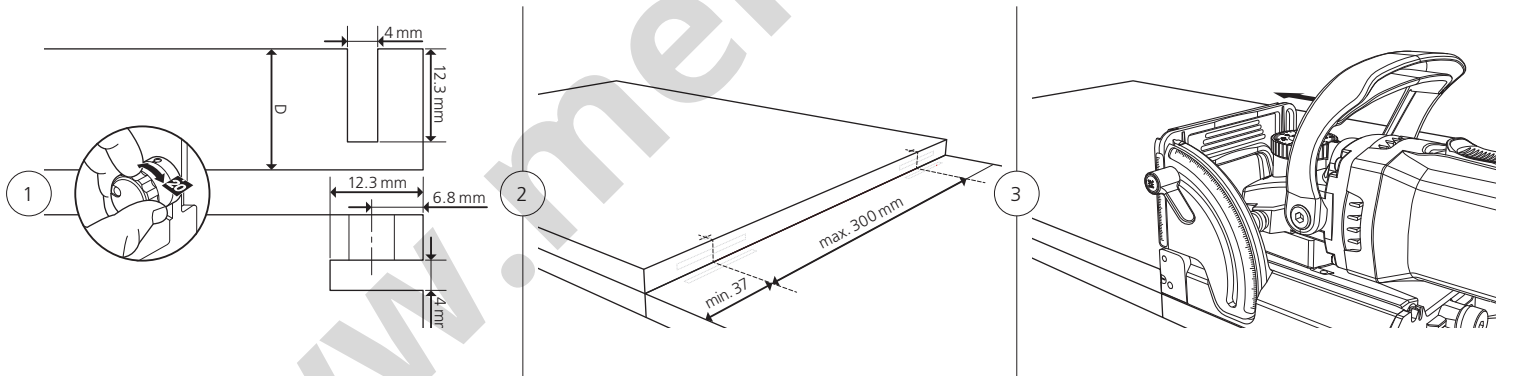
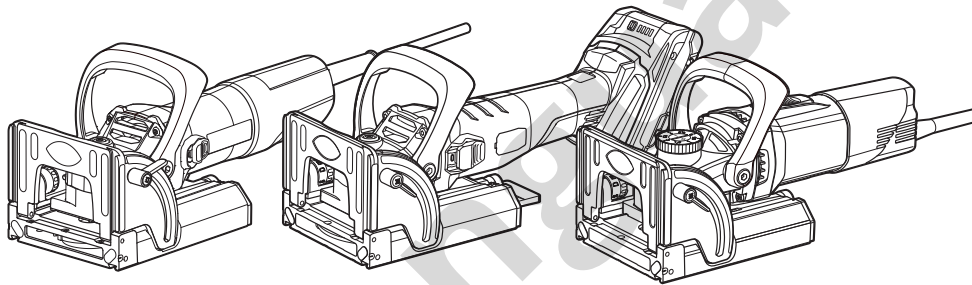
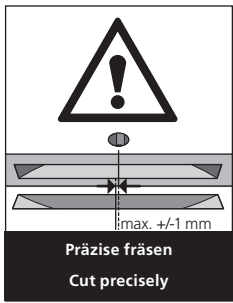
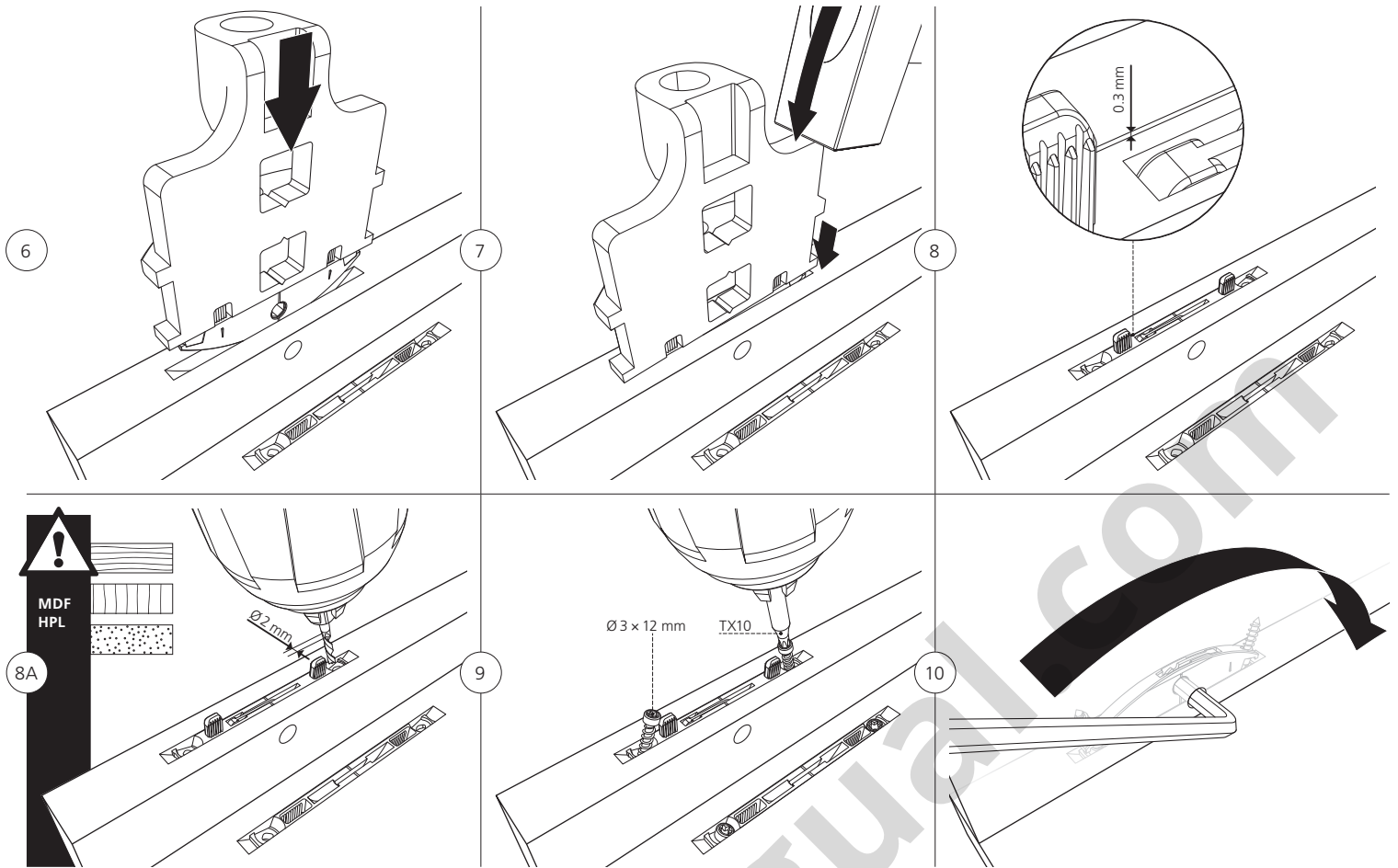


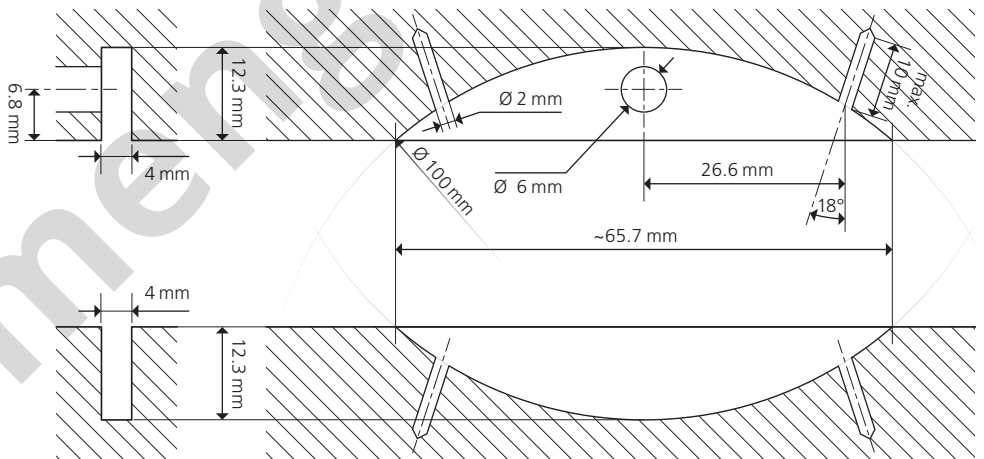
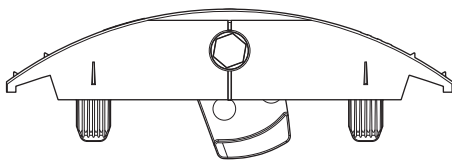
Bearbeitung mit Nutfräsmaschinen / Machining with biscuit joiner



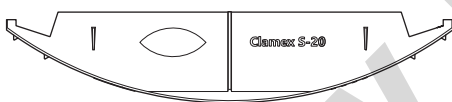
Montage | Assembly



Clamex S-20 mit Hebel / with lever



Clamex S-20 ohne Hebel / without lever



Technische Informationen | Technical information

Grösse Size	59 x 12 x 3.9 mm	Zugfestigkeit Tensile strength 10N ~ 1 kg*	Scherfestigkeit Shear strength 10N ~ 1 kg*	Spannkraft Clamping force 10N ~ 1 kg*			
Fräser Cutter	Ø 100 x 4 x 22 mm	F1	F2	F3			
Material Gehäuse	Glasfaserverstärkter Kunststoff						
Material housing	Fiberglass reinforced plastic						
Material Hebel	Zink Druckguss						
Material of lever	Zinc die cast						
Einbautoleranz	Längs ± 1 mm	Spanplatte particle board	490*	Spanplatte particle board	610*	Spanplatte particle board	490*
Installation tolerace	Longitudinal ± 1 mm	MDF	620*	MDF	890*	MDF	620*
		Buche Beech	620*	Buche Beech	1470*	Buche Beech	620*
Schiebetoleranz	Radial ± 0 mm						
Schiebetoleranz	Radial ± 0 mm						