

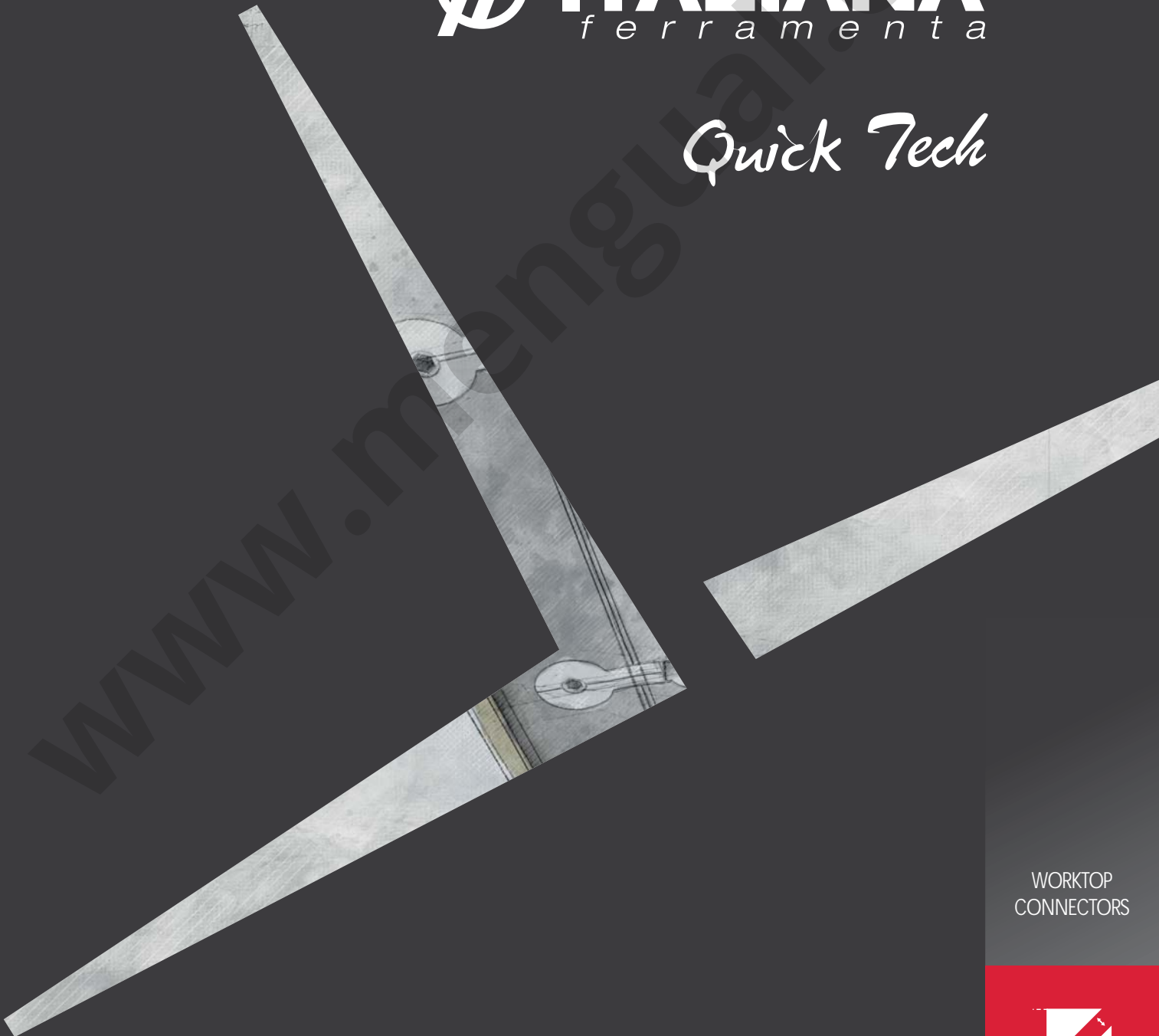


# MENGUAL<sup>®</sup>



**ITALIANA<sup>®</sup>**  
f e r r a m e n t a

*Quick Tech*



WORKTOP  
CONNECTORS



## QUICK TECH



QUICK TECH has been conceived to join two worktops or panels together.

It consists of two parts:

- main body with tightening dowel M8x64, M8x100 or M8x150;
- round cap to suit the dowel head.

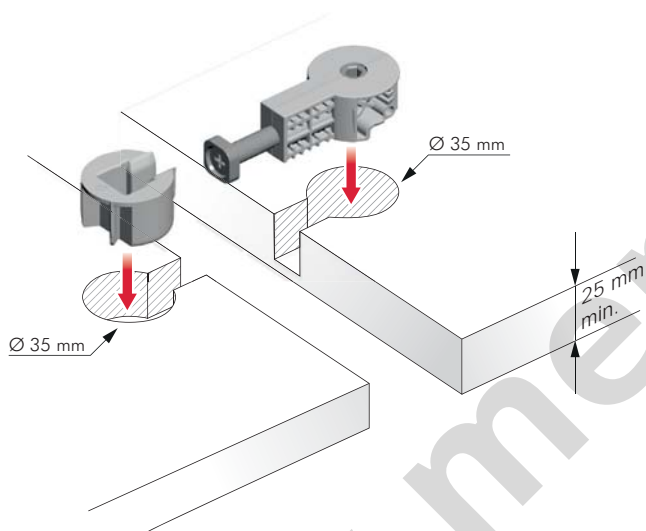
The installation is fast and simple as the two parts don't fall when placed in position.

The fastening becomes easier by using an S6 mm allen wrench, or even better, a cordless driver.

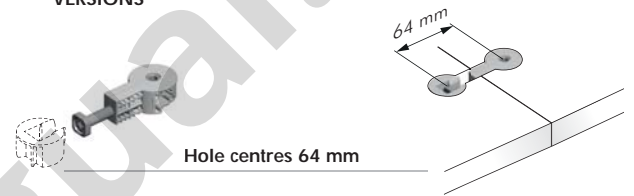
It is suitable for worktops and panels minimum 25 mm thick.



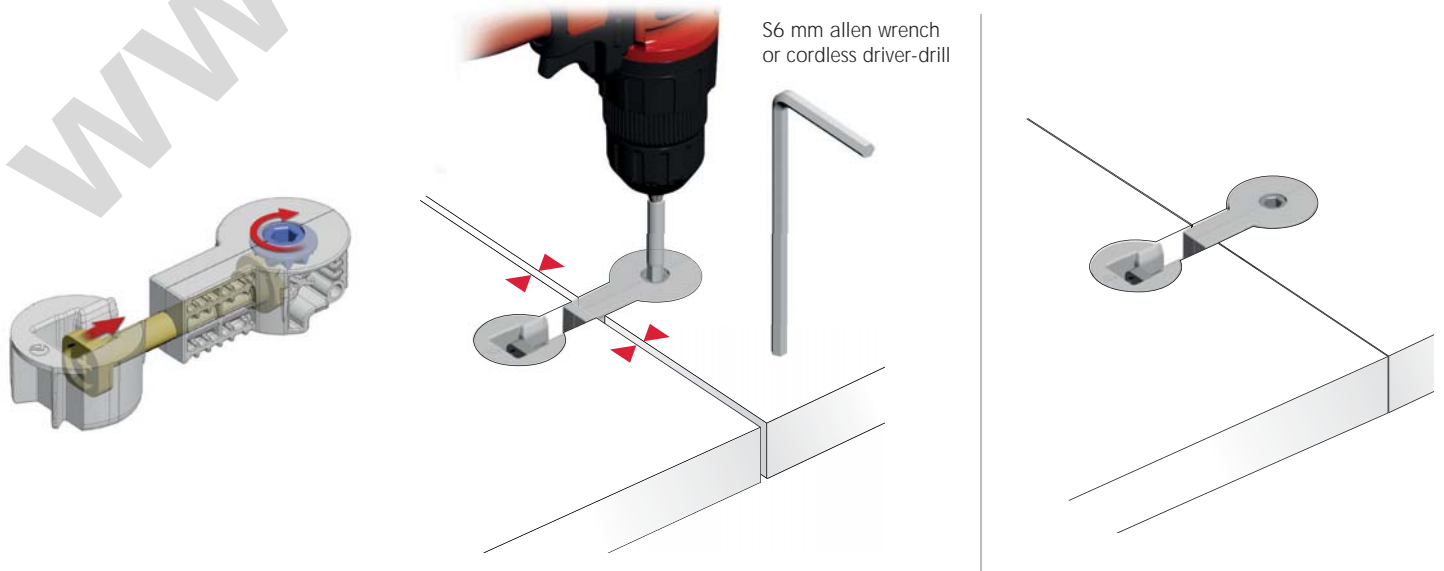
### INSTALLATION

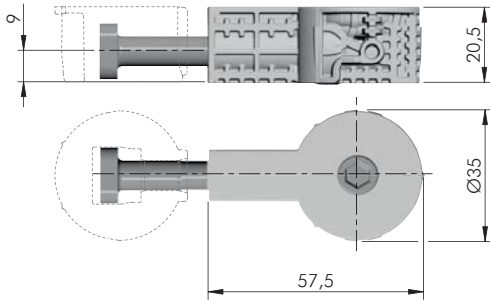
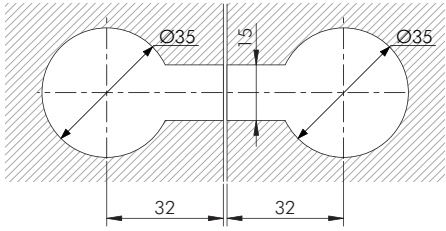
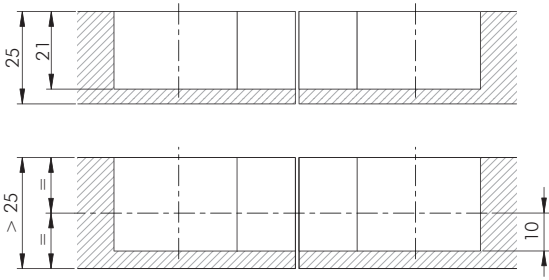


### VERSIONS

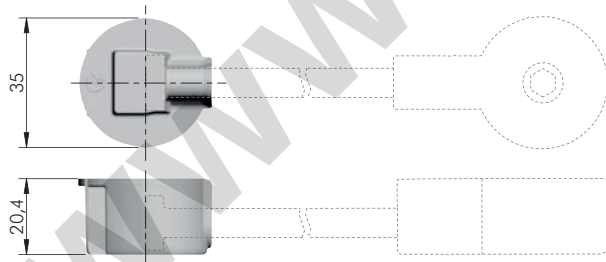


### ASSEMBLING





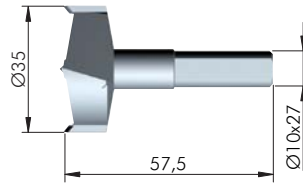
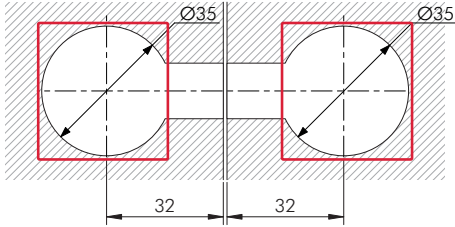
= Ø 35 mm	= S6		
ZA	ST	EP	= 250 pcs.
123 			
<b>2162105000</b>			



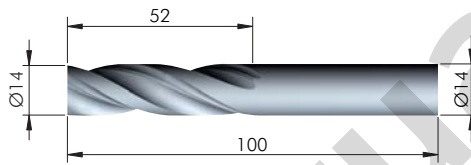
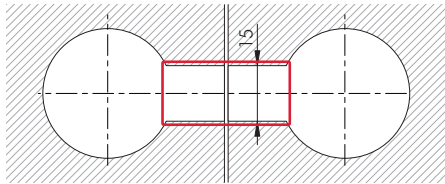
= Ø 35 mm	
EP	= 500 pcs.
123 	
<b>2162001000</b>	



**DRILL BIT FOR QUICK TECH**



HSS	= on request
<b>3175201000</b>	



HSS	= on request
<b>1621454000</b>	

www.mengual.com