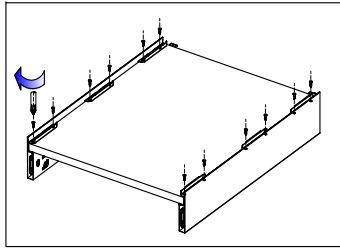


Montaje Cajón Milán

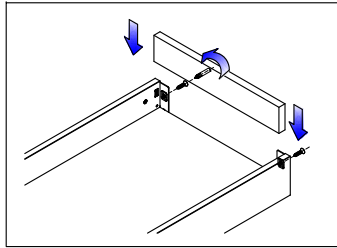
808 Series slender metal drawer

Assembly removal and adjustment

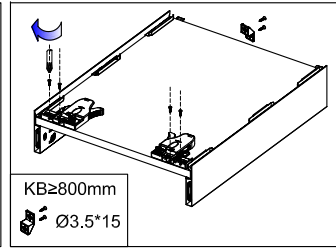
Drawer assembly



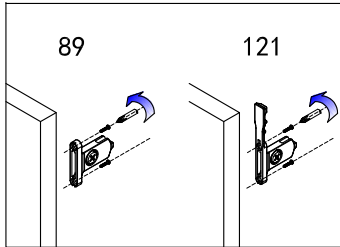
Bottom assembly



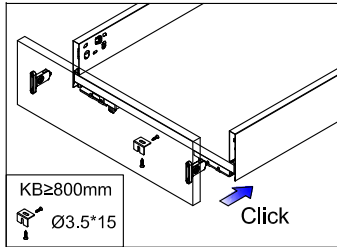
Back assembly



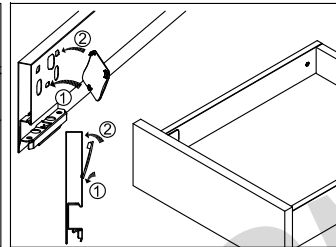
Locking Brackets assembly



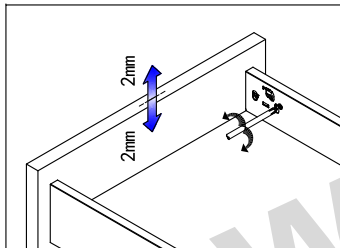
Front assembly



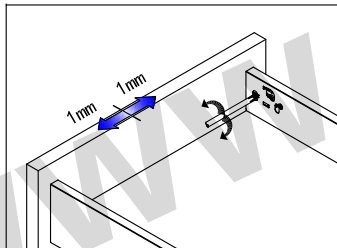
Click



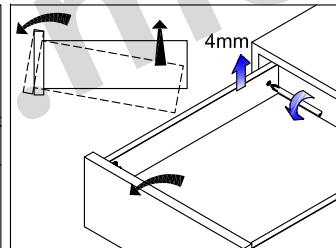
Adjustment



Up&down adjustment

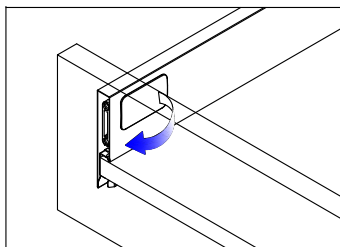


Left&right adjustment

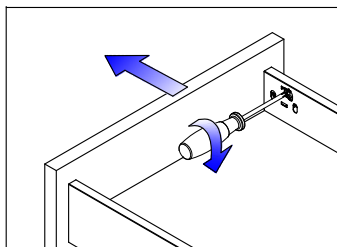


Front slope angle adjustment

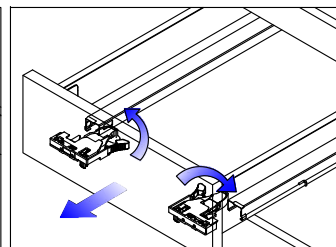
Removal



Tip up the cover and pull out



Removal drawer front

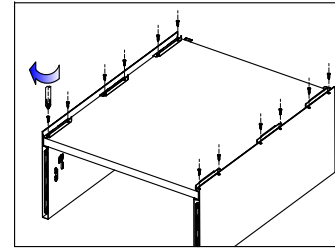


Removal drawer

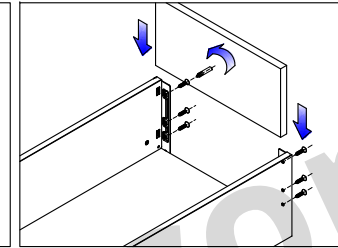
808 Series slender metal drawer

Assembly removal and adjustment

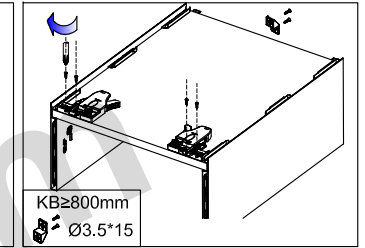
Drawer assembly



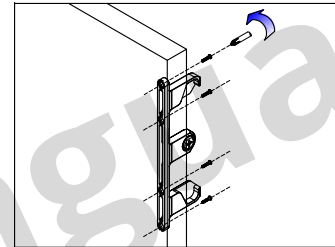
Bottom assembly



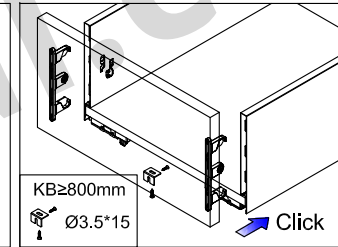
Locking Brackets assembly



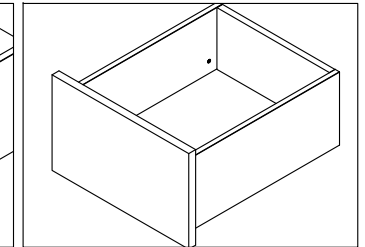
Back assembly



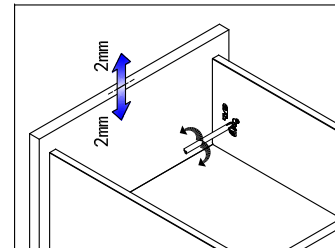
Front assembly



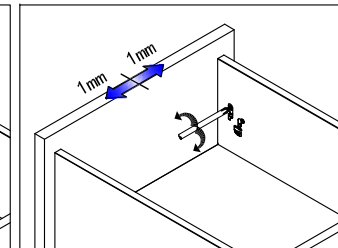
Click



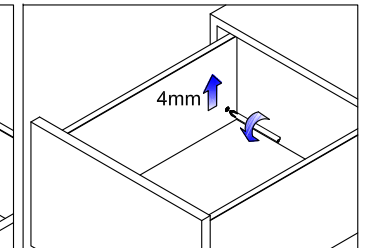
Adjustment



Up&down adjustment

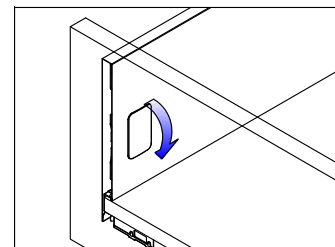


Left&right adjustment

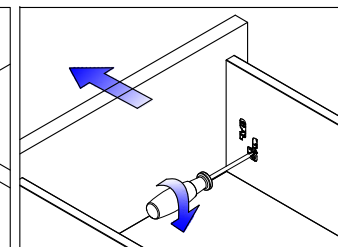


Front slope angle adjustment

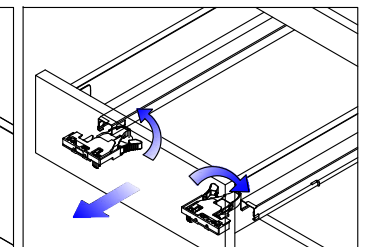
Removal



Tip up the cover and pull out



Removal drawer front



Removal drawer